

NEX



25 Alisma Avenue Deanside VIC

5 3 2

NEX Real Estate proudly presents this exceptional, beautifully upgraded family home, perfectly positioned on a generous 500m² (approx.) allotment in the heart of Deanside. Crafted with elegance, space and high-end finishes throughout, this residence delivers the ultimate lifestyle for families who want luxury, comfort, and functional design all under one impressive roof.

From the moment you arrive, the home makes a powerful statement-highlighted by grand double front doors with a modern digital lock, and a stunning 3-metre-high entrance ceiling that immediately creates a sense of space, sophistication and prestige.

[For full version visit the website](https://www.nexrealstate.com.au)

Type : House
Land Size : 500 sqm
View : <https://www.nexrealstate.com.au/sale/vic/west/deanside/residential/house/8604250>



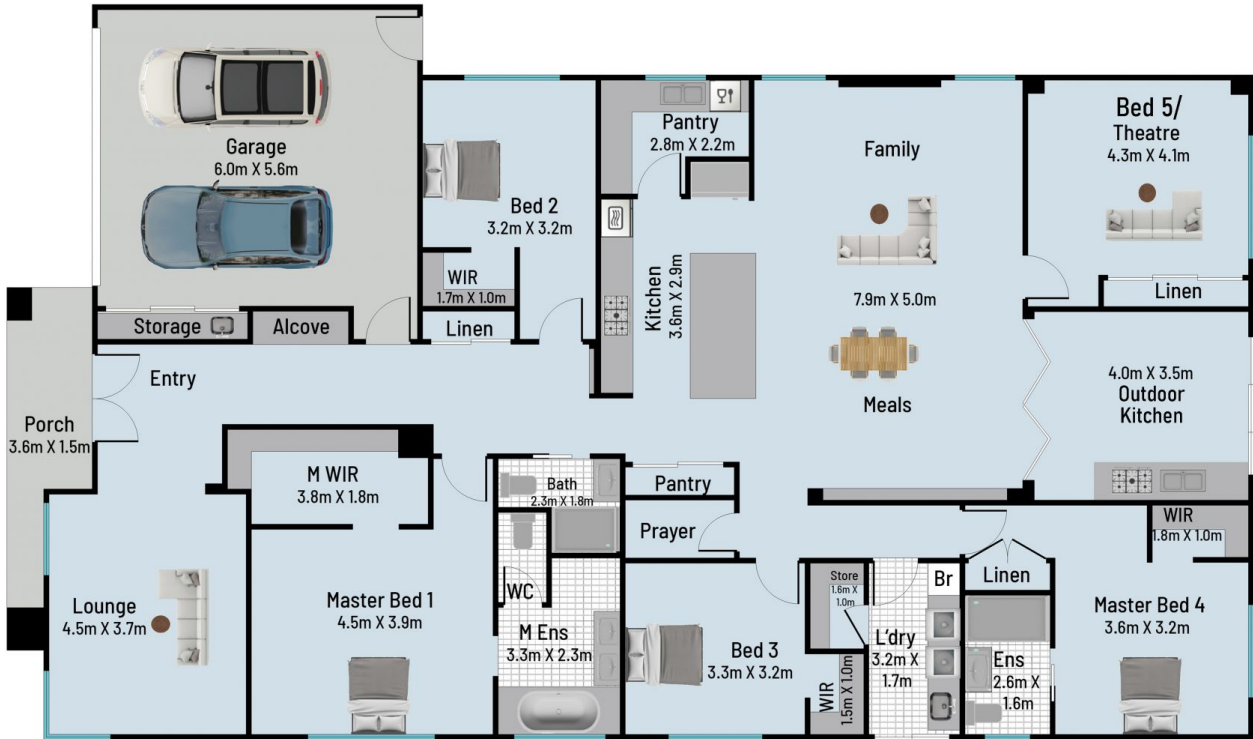
Shubham Rana
03 9743 5104



Sky Sharma
03 9743 5104

<https://www.nexrealstate.com.au>

PO BOX 222 Melton VIC 3337
(04) 5254 0022 info@nexrealstate.com.au



**Whilst every attempt has been made to ensure the accuracy of the floor plan contained here, measurements of doors, windows, rooms and any other items are approximate and no responsibility is taken for any error, omission or mis-statement. This plan is for illustrative purpose only and should be used as such by any prospective purchaser. The services, systems and appliances shown have not been tested and no guarantee as to their operability or efficiency can be given.

25 Alisma Ave, Deanside